

4 BEDROOMS

 LIMASSOL GREENS

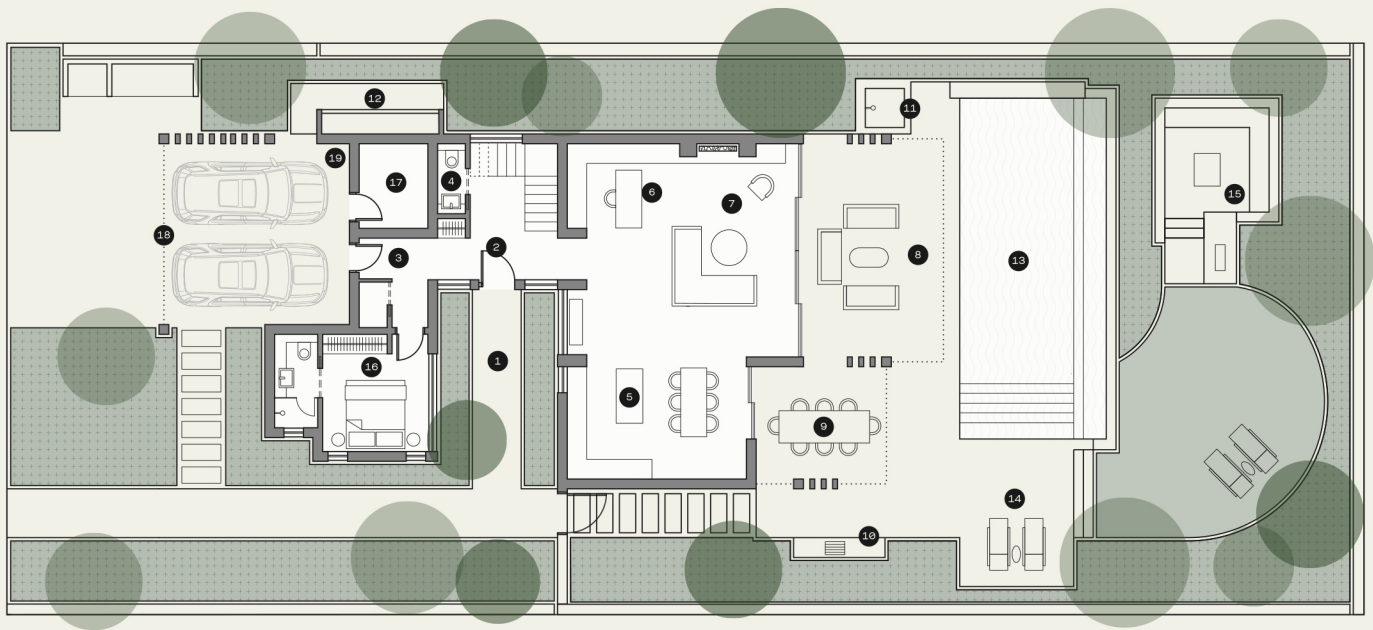
KINGFISHER



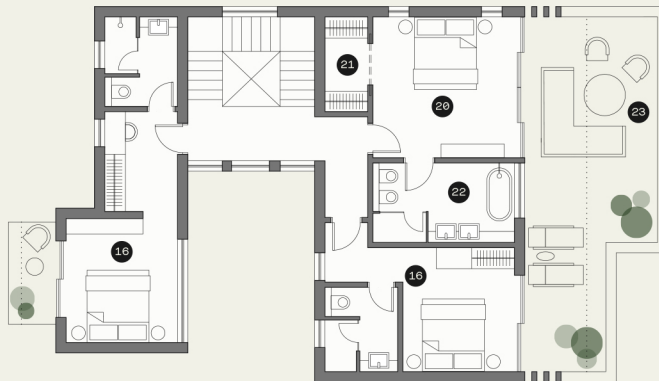
HIGHLIGHTS

- Large plot with breath-taking golf course and lake views
- All bedrooms are ensuite. Principal suite with dedicated dressing room and bathroom with his & hers vanity.
- Staff bedroom & bathroom
- Eco-friendly design featuring double glazing, solar panels, provision for electric vehicle charging
- High Ceilings. Wide and tall window and door openings
- High standard kitchen cabinets/ wardrobes/sanitary ware from European brands. Security and fireproof entrance door
- VRV air cooling system & under floor heating.
- Home automations (smart-home technology) – optional upgrades available

GROUND FLOOR



FIRST FLOOR



AREAS

01 Entrance courtyard	12 Water feature	Plot size	754m ²
02 Entrance hall	13 Swimming pool	Internal covered area	232m ²
03 Secondary entrance through car park	14 Swimming pool terrace	Covered terraces	54m ²
04 Powder room	15 Outdoor living/firepit	Covered terraces (pergola)	15m ²
05 Kitchen and dining	16 Bedroom with ensuite	Covered parking (pergola)	32m ² (2 cars)
06 Study/flexible space	17 Technical room	Uncovered terraces	92m ²
07 Lounge/living room	18 Covered parking (pergola)	Swimming pool	47m ²
08 Lounge terrace and outdoor dining	19 Provision for electric vehicle charger	Principal suites	1
09 Outdoor dining	20 Principal suite	Bedrooms	3
10 Barbeque area	21 Dressing room	Ensuites	4
11 Outdoor shower	22 Principal suite bathroom		
	23 Principal suite terrace		

The areas are indicative for this Villa type and may vary according to the plot.